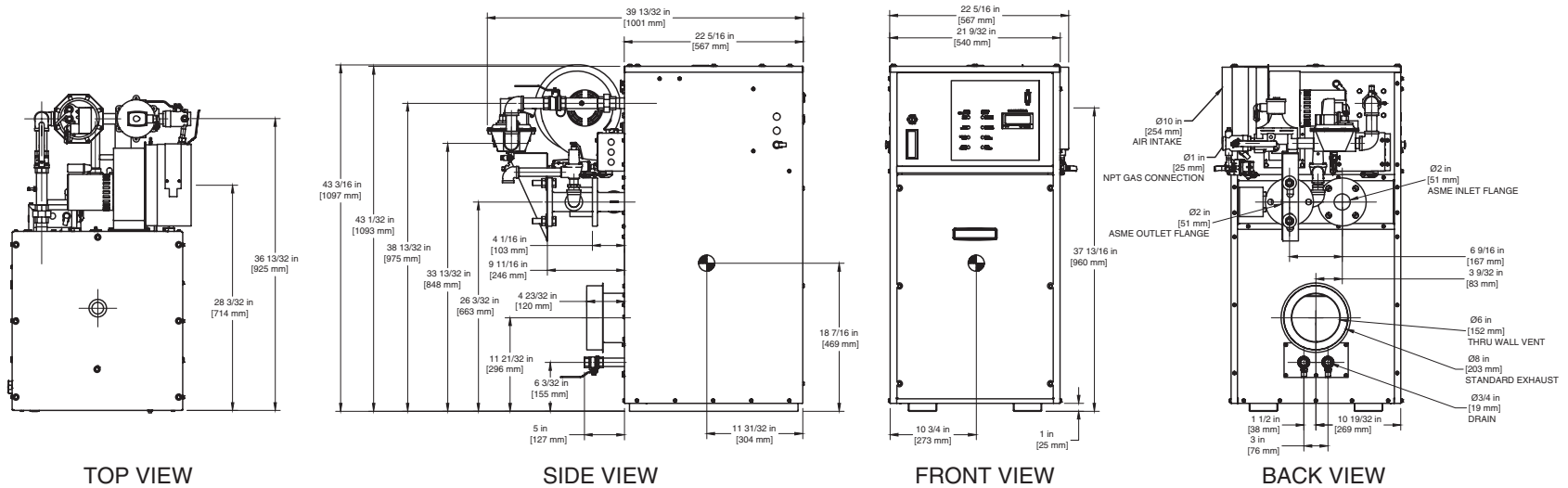


INDOOR UNIT

RSUB-64 REV D

CODE OPTIONS

CSD-1	Manual Reset LWCO
-------	-------------------



Notes:

1. Dimensions are approximate and should not be used to "rough-in" equipment.
2. Dimensions are subject to change without notice.

BOILER CERTIFIED RATINGS & CAPACITIES

Fuel Type	Natural/Propane Gas	Boiler FLA	5.3*
Input BTU/hr.	500,000 / 147 kW	Min. Gas Pressure Required	5"W.C.**
Output BTU/hr.	425,000 / 125 kW	Max. Gas Pressure Allowed	14"W.C.
Electrical Requirements	120 VAC / 1 ph / 60 hz	Operating Weight	422 lbs. / 192 kg.

BOILER TEMPERATURE RISE / PRESSURE DROP

20°F / 11.1°C				25°F / 13.9°C			
Flow Rate		Pressure Drop		Flow Rate		Pressure Drop	
GPM	L/s	Ft	kPa	GPM	L/s	Ft	kPa
42.5	2.7	0.53	1.5	34.0	2.1	0.35	1.0

BOILER / WATER HEATER TRIM & CONTROLS

Main Gas Valve	V4944B	Main Ball Valve	1"
Firing Valve	1"	Pilot Regulator	White-Rodgers 25M
Safety Valve	ASCO L8214G 1"	Air Switch	HUBA
Ignition Control	Honeywell RM7897C	Blower Motor	Fasco 1/4 hp - FLA 3.6
Operating Control (FB/FW)	Jumo	Relief Valve - FB	3/4" x 3/4" set @ 50 psi
High Limit	Honeywell L4008E	Relief Valve - FW	3/4" x 3/4" set @ 125 psi
		Flow Switch	TACO

WATER HEATER HOURLY RECOVERY CAPACITY (GPH & LPH)

40°F	22°C	60°F	33°C	80°F	44°C	100°F	56°C	120°F	67°C	140°F	78°C
1224	4629	816	3086	612	2314	490	1851	408	1543	350	1322

Futera II 500 model water heater not available for sale in Canada due to NRCAN Regulations.

A.S.M.E.

ASME Sect IV Htg Surface	69.51 Sq. Ft. / 6.46 Sq. M.	Design Data	Max. 160 psig & 250°F
Water Volume	3.4 gal / 12.9 Liters		

* Add circulator amps.

** For incoming gas pressures lower than 5" W.C. natural or 11" W.C. propane, consult factory.

REP FIRM _____

SUBMITTED BY _____

JOB NAME _____

ARCHITECT _____

ENGINEER _____

CONTRACTOR _____

DATE _____

FUTERA II 500

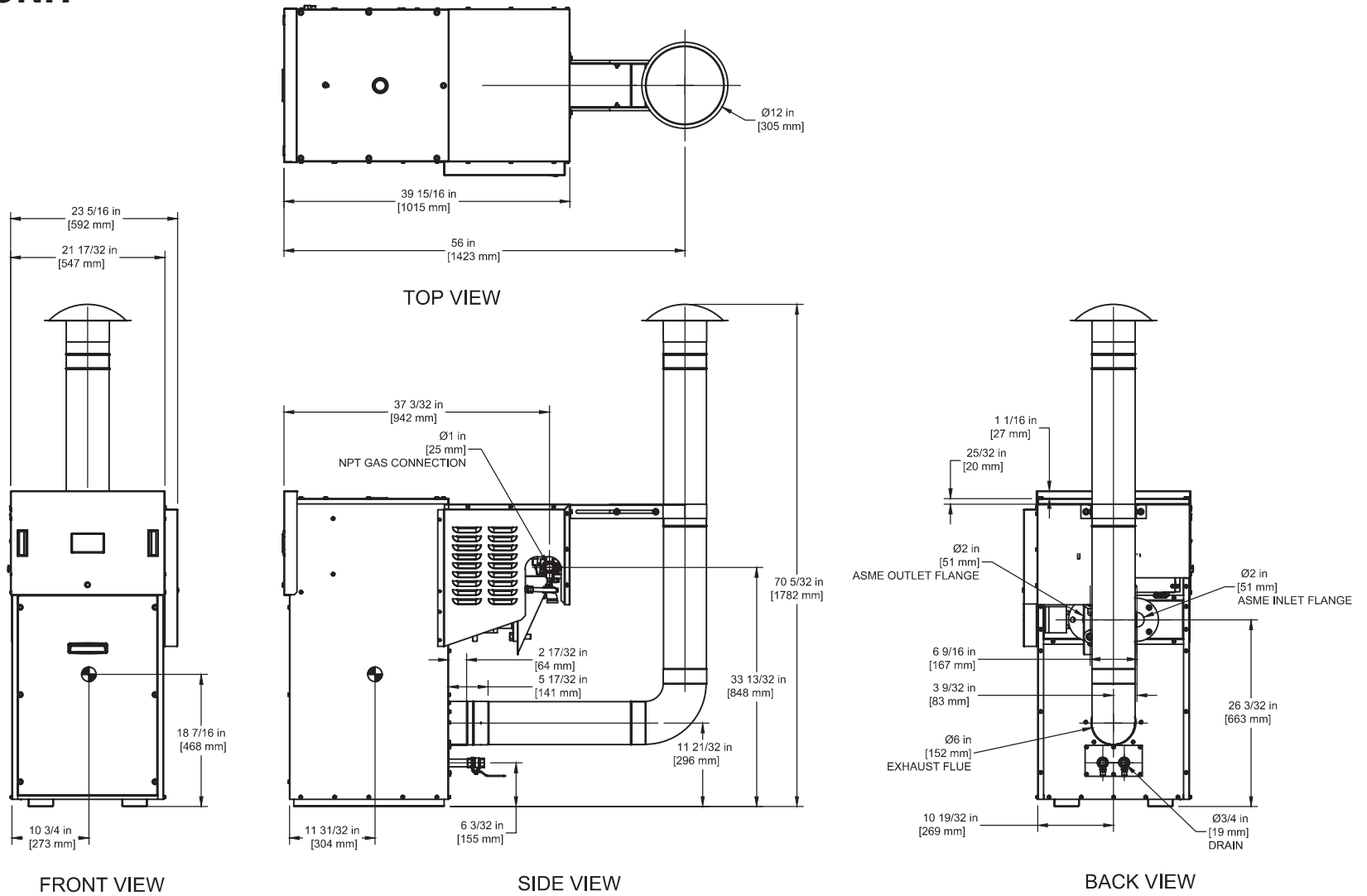
Category I or Category III Appliance

(see Installation and Operation Manual for venting information)



A Division of Mestek, Inc.
Westfield, MA 01085
(413) 568-9571

OUTDOOR UNIT



FUTERA II 500

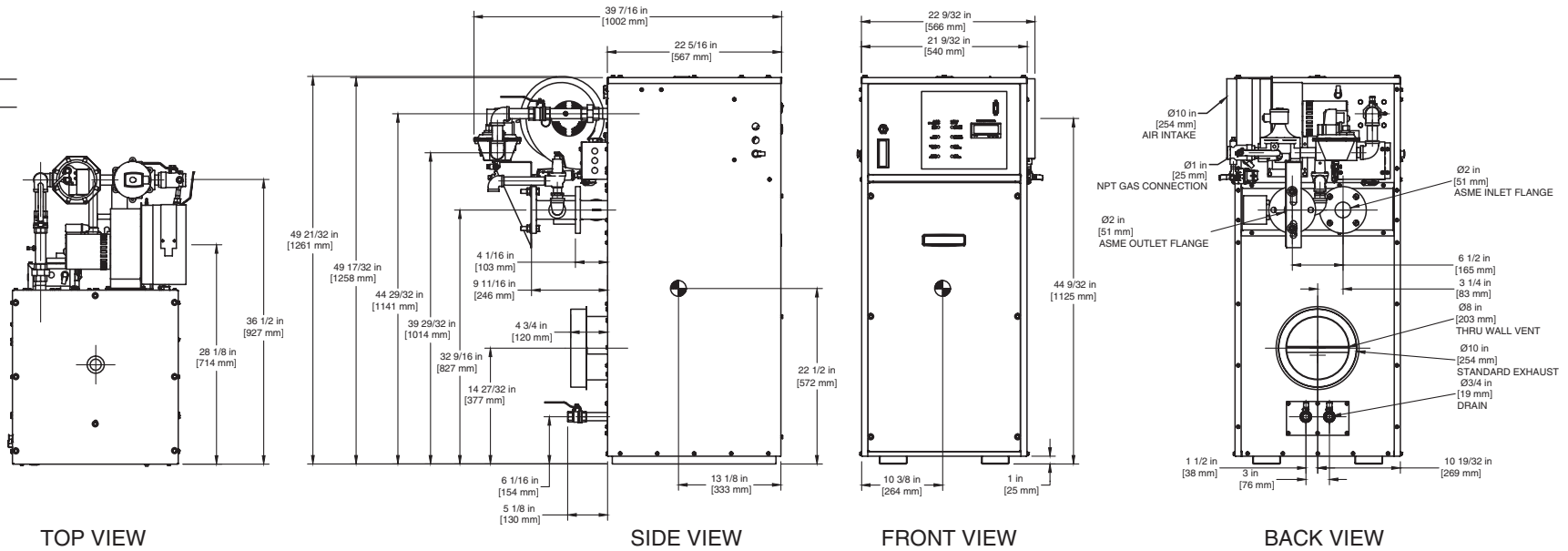
- Notes:**
1. Dimensions are approximate and should not be used to "rough-in" equipment.
 2. Dimensions are subject to change without notice.

INDOOR UNIT

RSUB-65 REV D

CODE OPTIONS

CSD-1 Manual Reset LWCO



Notes:

1. Dimensions are approximate and should not be used to "rough-in" equipment.
2. Dimensions are subject to change without notice.

BOILER CERTIFIED RATINGS & CAPACITIES

Fuel Type	Natural/Propane Gas	Boiler FLA	5.3*
Input BTU/hr.	750,000 / 220 kW	Min. Gas Pressure Required	5" W.C.**
Output BTU/hr.	637,500 / 187 kW	Max. Gas Pressure Allowed	14" W.C.
Electrical Requirements	120 VAC / 1 ph / 60 hz	Operating Weight	468 lbs. / 212 kg.

BOILER TEMPERATURE RISE / PRESSURE DROP

20°F / 11.1°C				25°F / 13.9°C				30°F / 16.7°C				35°F / 19.4°C			
Flow Rate		Pressure Drop		Flow Rate		Pressure Drop		Flow Rate		Pressure Drop		Flow Rate		Pressure Drop	
GPM	L/s	Ft	kPa	GPM	L/s	Ft	kPa	GPM	L/s	Ft	kPa	GPM	L/s	Ft	kPa
63.8	4.0	1.57	4.6	51.0	3.2	1.04	3.1	42.5	2.7	0.70	2.2	36.4	2.3	0.60	1.6

BOILER / WATER HEATER TRIM & CONTROLS

Main Gas Valve	V4944B	Main Ball Valve	1"
Firing Valve	1"	Pilot Regulator	White-Rodgers 25M
Safety Valve	ASCO L8214G 1"	Air Switch	HUBA
Ignition Control	Honeywell RM7897C	Blower Motor	Fasco 1/4 hp - FLA 3.6
Operating Control (FB/FW)	Jumo	Relief Valve - FB	3/4" x 3/4" set @ 50 psi
High Limit	Honeywell L4008E	Relief Valve - FW	3/4" x 3/4" set @ 125 psi
		Flow Switch	TACO

WATER HEATER HOURLY RECOVERY CAPACITY (GPH & LPH)

40°F	22°C	60°F	33°C	80°F	44°C	100°F	56°C	120°F	67°C	140°F	78°C
1877	7096	1252	4731	939	3548	751	2838	626	2365	536	2027

Futera II 750 model water heater not available for sale in Canada due to NRCAN Regulations.

A.S.M.E.

ASME Sect IV Htg Surface	97.79 Sq. Ft. / 9.08 Sq. M.	Design Data	Max. 160 psig & 250°F
Water Volume	3.7 gal / 14.0 Liters		

* Add circulator amps.

** For incoming gas pressures lower than 5" W.C. natural or 11" W.C. propane, consult factory.

REP FIRM _____

SUBMITTED BY _____

JOB NAME _____

ARCHITECT _____

ENGINEER _____

CONTRACTOR _____

DATE _____

FUTERA II 750

Category I or Category III Appliance

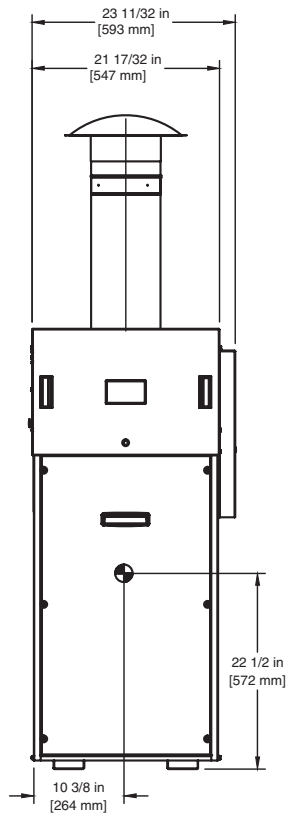
(see Installation and Operation Manual for venting information)



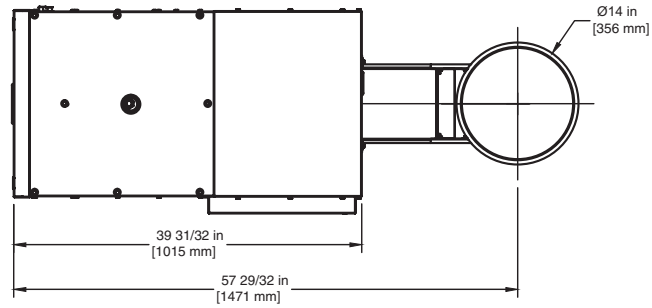
A Division of Mestek, Inc.
Westfield, MA 01085
(413) 568-9571

OUTDOOR UNIT

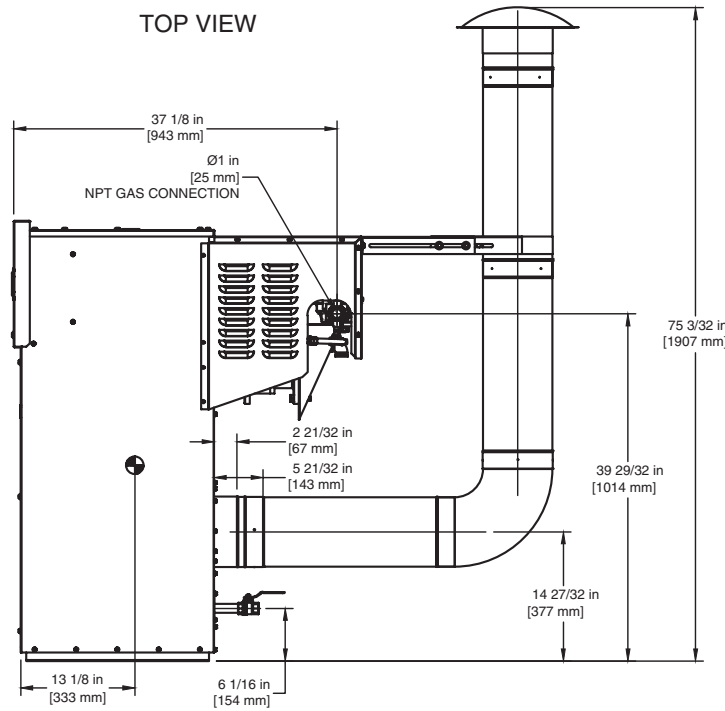
RSUB-152



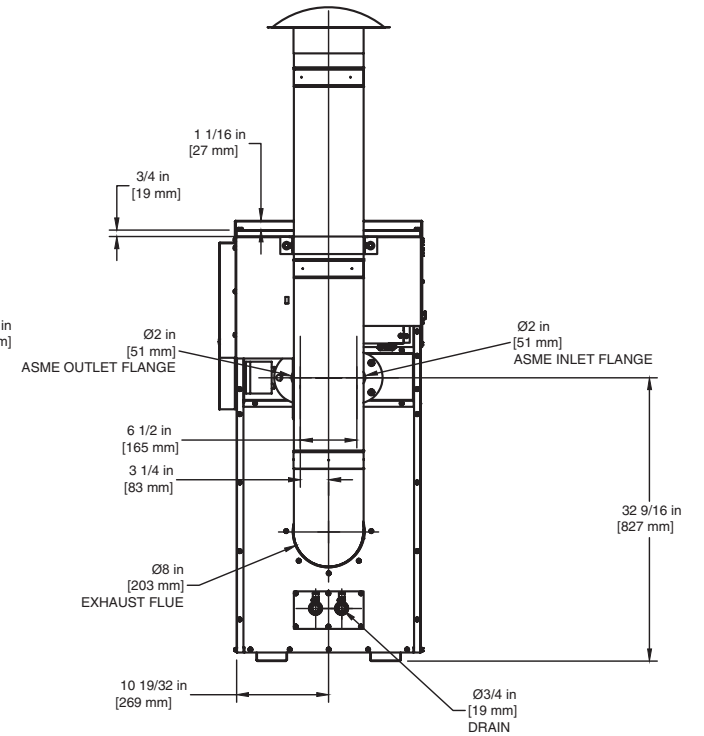
FRONT VIEW



TOP VIEW



SIDE VIEW



BACK VIEW

FUTERA II 750

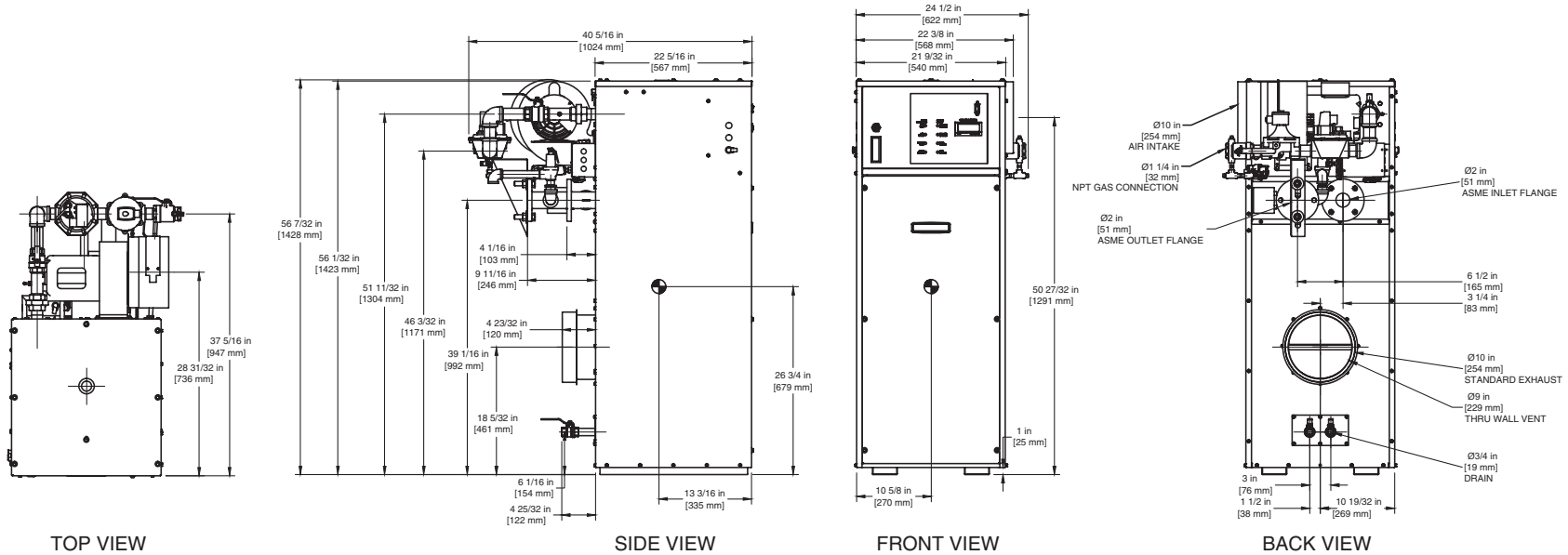
- Notes:**
1. Dimensions are approximate and should not be used to "rough-in" equipment.
 2. Dimensions are subject to change without notice.

INDOOR UNIT

RSUB-66 REV D

CODE OPTIONS

CSD-1 Manual Reset LWCO



Notes:

1. Dimensions are approximate and should not be used to "rough-in" equipment.
2. Dimensions are subject to change without notice.

BOILER CERTIFIED RATINGS & CAPACITIES

Fuel Type	Natural/Propane Gas	Boiler FLA	5.3*
Input BTU/hr.	1,000,000 / 293 kW	Min. Gas Pressure Required	5"W.C.**
Output BTU/hr.	850,000 / 249 kW	Max. Gas Pressure Allowed	14"W.C.
Electrical Requirements	120 VAC / 1 ph / 60 hz	Operating Weight	578 lbs. / 262 kg.

BOILER TEMPERATURE RISE / PRESSURE DROP

20°F / 11.1°C				25°F / 13.9°C				30°F / 16.7°C				35°F / 19.4°C			
Flow Rate		Pressure Drop		Flow Rate		Pressure Drop		Flow Rate		Pressure Drop		Flow Rate		Pressure Drop	
GPM	L/s	Ft	kPa	GPM	L/s	Ft	kPa	GPM	L/s	Ft	kPa	GPM	L/s	Ft	kPa
85.0	5.4	3.44	10.1	68.0	4.3	2.27	6.7	56.7	3.6	1.60	4.8	48.6	3.1	1.20	3.6

BOILER / WATER HEATER TRIM & CONTROLS

Main Gas Valve	V4944B	Main Ball Valve	1 1/4"
Firing Valve	1 1/4"	Pilot Regulator	White-Rodgers 25M
Safety Valve	ASCO L8214G 1 1/4"	Air Switch	HUBA
Ignition Control	Honeywell RM 7897C	Blower Motor	Fasco 1/4 hp - FLA 3.
Operating Control (FB/FW)	Jumo	Relief Valve - FB	3/4" x 1" set @ 50 psi
High Limit	Honeywell L4008E	Relief Valve - FW	3/4" x 3/4" set @ 125 psi
		Flow Switch	TACO

WATER HEATER HOURLY RECOVERY CAPACITY (GPH & LPH)

40°F	22°C	60°F	33°C	80°F	44°C	100°F	56°C	120°F	67°C	140°F	78°C
2500	9450	1667	6300	1250	4725	1000	3780	833	3150	714	2700

Futera II 1000 model water heater not available for sale in Canada due to NRCan Regulations.

A.S.M.E.

ASME Sect IV Htg Surface	126.07 Sq. Ft. / 11.71 Sq. M.	Design Data	Max. 160 psig & 250°F
Water Volume	4.0 gal / 15.2 Liters		

* Add circulator amps.

** For incoming gas pressures lower than 5" W.C. natural or 11" W.C. propane, consult factory.

REP FIRM _____

SUBMITTED BY _____

JOB NAME _____

ARCHITECT _____

ENGINEER _____

CONTRACTOR _____

DATE _____

FUTERA II 1000

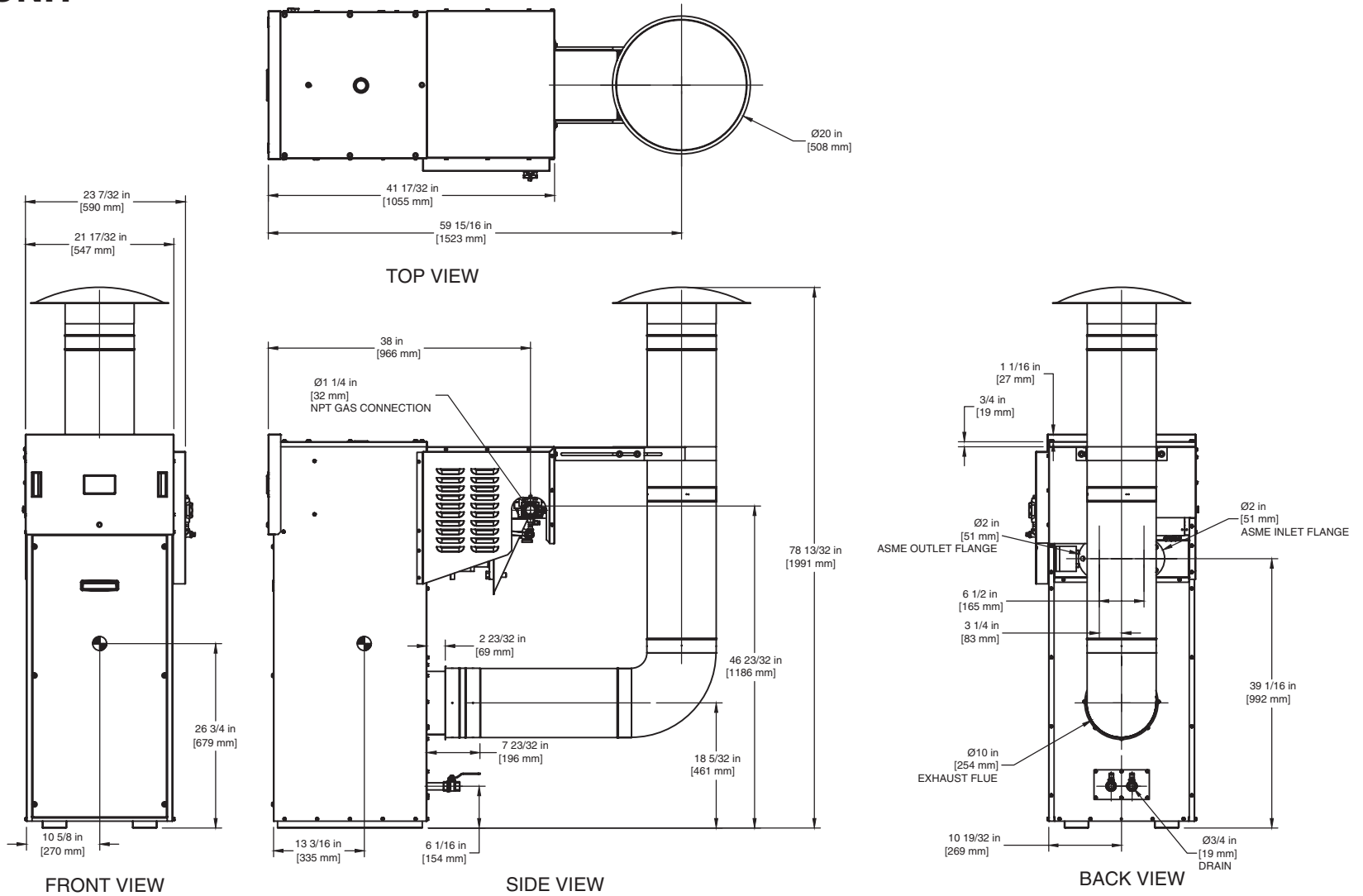
Category I or Category III Appliance

(see Installation and Operation Manual for venting information)



A Division of Mestec, Inc.
Westfield, MA 01085
(413) 568-9571

OUTDOOR UNIT



FUTERA II 1000

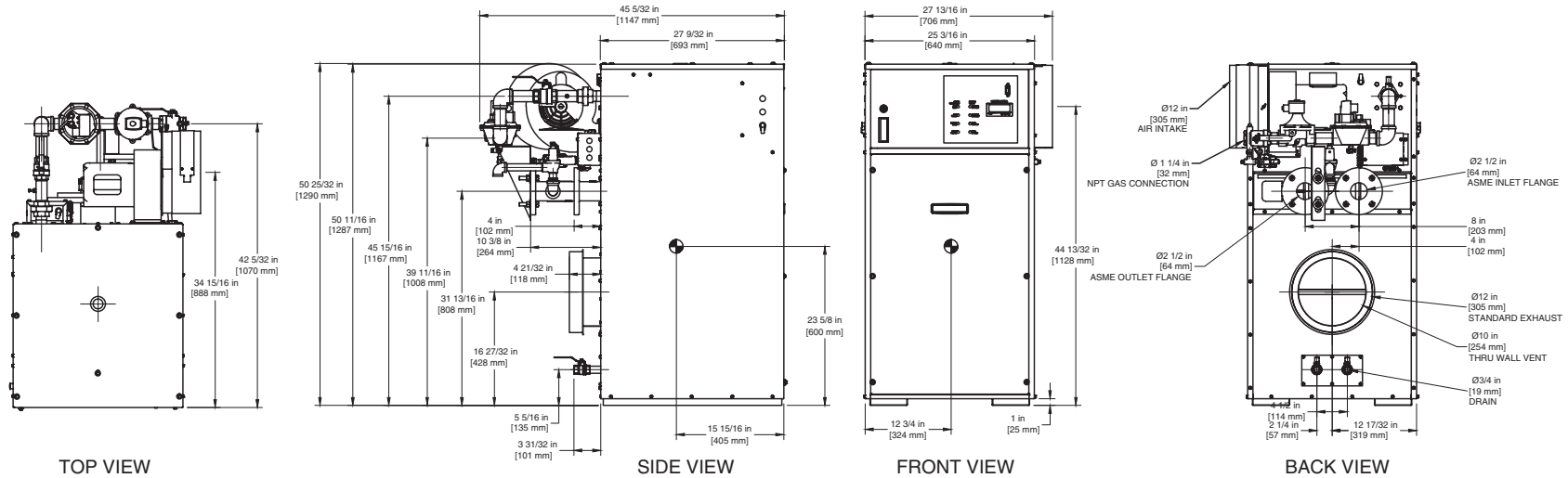
- Notes:**
1. Dimensions are approximate and should not be used to "rough-in" equipment.
 2. Dimensions are subject to change without notice.

INDOOR UNIT

RSUB-67 REV D

CODE OPTIONS

CSD-1 Manual Reset LWCO



Notes:

1. Dimensions are approximate and should not be used to "rough-in" equipment.
2. Dimensions are subject to change without notice.

BOILER CERTIFIED RATINGS & CAPACITIES

Fuel Type	Natural/Propane Gas	Boiler FLA	9.9*
Input BTU/hr.	1,250,000 / 366 kW	Min. Gas Pressure Required	5" W.C.**
Output BTU/hr.	1,062,500 / 311 kW	Max. Gas Pressure Allowed	14" W.C.
Electrical Requirements	120 VAC / 1 ph / 60 hz	Operating Weight	673 lbs. / 306 kg.

BOILER TEMPERATURE RISE / PRESSURE DROP

20°F / 11.1°C				25°F / 13.9°C				30°F / 16.7°C				35°F / 19.4°C			
Flow Rate		Pressure Drop		Flow Rate		Pressure Drop		Flow Rate		Pressure Drop		Flow Rate		Pressure Drop	
GPM	L/s	Ft	kPa	GPM	L/s	Ft	kPa	GPM	L/s	Ft	kPa	GPM	L/s	Ft	kPa
106.3	6.7	2.11	6.2	85.0	5.4	1.40	4.1	70.8	4.5	1.00	2.9	60.7	3.8	0.70	2.2

BOILER / WATER HEATER TRIM & CONTROLS

Main Gas Valve	V4944B	Pilot Regulator	White-Rodgers 25M
Firing Valve	1 1/4"	Main Ball Valve	1 1/4"
Safety Valve	ASCO L8214G 1 1/4"	Air Switch	HUBA
Ignition Control	Honeywell RM7897C	Blower Motor	Fasco 1/2 hp - FLA 8.2
Operating Control (FB/FW)	Jumo	Relief Valve - FB	3/4" x 1" set @ 50 psi
High Limit	Honeywell L4008E	Relief Valve - FW	3/4" x 3/4" set @ 125 psi
		Flow Switch	TACO

WATER HEATER HOURLY RECOVERY CAPACITY (GPH & LPH)

40°F	22°C	60°F	33°C	80°F	44°C	100°F	56°C	120°F	67°C	140°F	78°C
3121	11798	2081	7866	1561	5899	1248	4719	1040	3933	892	3371

Futera II 1250 model water heater not available for sale in Canada due to NRCAN Regulations.

A.S.M.E.

ASME Sect IV Htg Surface	133.76 Sq. Ft. / 12.43 Sq. M.	Design Data	Max. 160 psig & 250°F
Water Volume	4.7 gal / 17.8 Liters		

* Add circulator amps.

** For incoming gas pressures lower than 5" W.C. natural or 11" W.C. propane, consult factory.

REP FIRM _____
SUBMITTED BY _____
JOB NAME _____
ARCHITECT _____
ENGINEER _____
CONTRACTOR _____
DATE _____

FUTERA II 1250

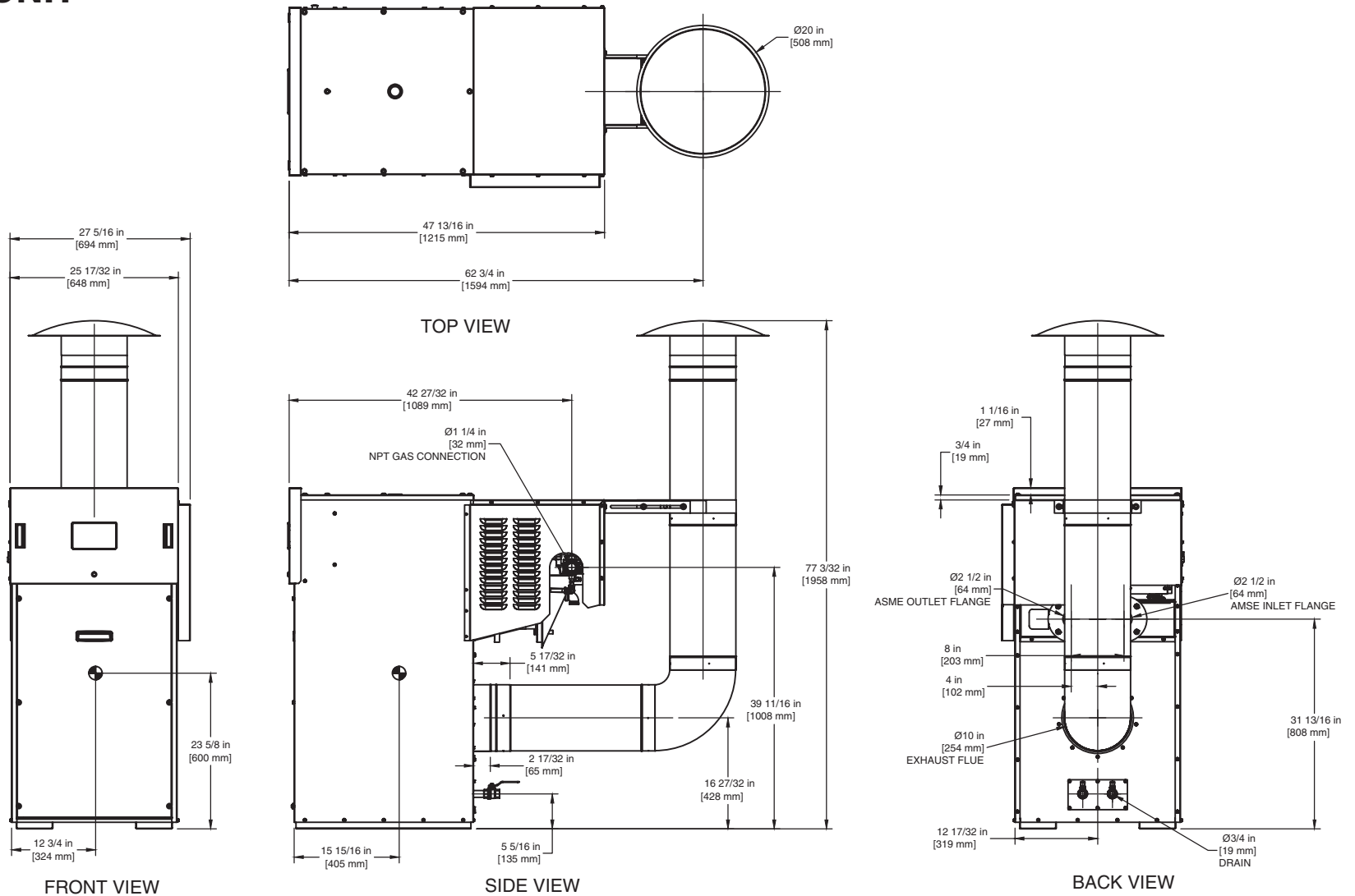
Category I or Category III Appliance

(see Installation and Operation Manual for venting information)



A Division of Mestec, Inc.
Westfield, MA 01085
(413) 568-9571

OUTDOOR UNIT



FUTERA II 1250

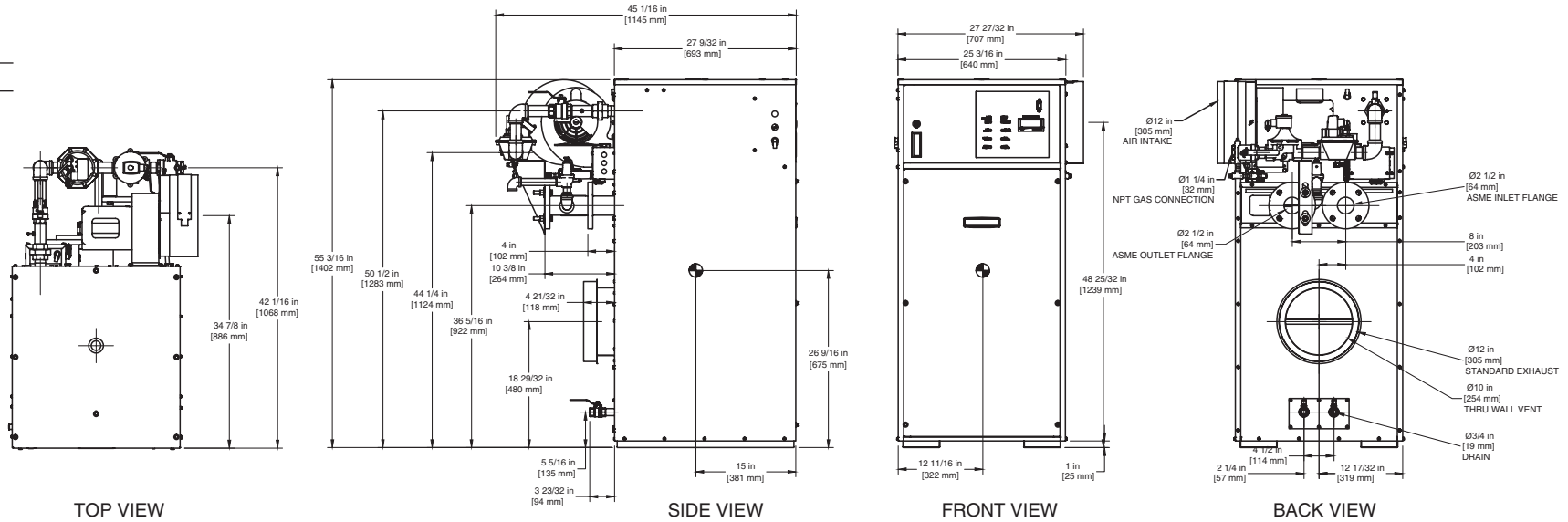
- Notes:**
1. Dimensions are approximate and should not be used to "rough-in" equipment.
 2. Dimensions are subject to change without notice.

INDOOR UNIT

RSUB-68 REV D

CODE OPTIONS

CSD-1 Manual Reset LWCO



Notes:

1. Dimensions are approximate and should not be used to "rough-in" equipment.
2. Dimensions are subject to change without notice.

BOILER CERTIFIED RATINGS & CAPACITIES

Fuel Type	Natural/Propane Gas	Boiler FLA	9.9*
Input BTU/hr.	1,500,000 / 440 kW	Min. Gas Pressure Required	5" W.C.**
Output BTU/hr.	1,275,000 / 374 kW	Max. Gas Pressure Allowed	14" W.C.
Electrical Requirements	120 VAC / 1 ph / 60 hz	Operating Weight	732 lbs. / 332 kg.

BOILER TEMPERATURE RISE / PRESSURE DROP

20°F / 11.1°C				25°F / 13.9°C				30°F / 16.7°C				35°F / 19.4°C			
Flow Rate		Pressure Drop		Flow Rate		Pressure Drop		Flow Rate		Pressure Drop		Flow Rate		Pressure Drop	
GPM	L/s	Ft	kPa	GPM	L/s	Ft	kPa	GPM	L/s	Ft	kPa	GPM	L/s	Ft	kPa
127.5	8.0	3.57	10.5	102.0	6.4	2.36	7.0	85.0	5.4	1.70	5.0	72.9	4.6	1.30	3.7

BOILER / WATER HEATER TRIM & CONTROLS

Main Gas Valve	V4944B	Main Ball Valve	1 1/4"
Firing Valve	1 1/4"	Pilot Regulator	White-Rodgers 25M
Safety Valve	ASCO L8214G 1 1/4"	Air Switch	HUBA
Ignition Control	Honeywell RM7897C	Blower Motor	Fasco 1/2 hp - FLA 8.2
Operating Control (FB/FW)	Jumo	Relief Valve - FB	1" x 1 1/4" set @ 50 psi
High Limit	Honeywell L4008E	Relief Valve - FW	3/4" x 3/4" set @ 125 psi
		Flow Switch	TACO

WATER HEATER HOURLY RECOVERY CAPACITY (GPH & LPH)

40°F	22°C	60°F	33°C	80°F	44°C	100°F	56°C	120°F	67°C	140°F	78°C
3741	14141	2494	9427	1870	7070	1496	5656	1247	4714	1069	4040

Futera II 1500 model water heater not available for sale in Canada due to NRCAN Regulations.

A.S.M.E.

ASME Sect IV Htg Surface	161.16 Sq. Ft. / 14.97 Sq. M.	Design Data	Max. 160 psig & 250°F
Water Volume	5.0 gal / 18.9 Liters		

* Add circulator amps.

** For incoming gas pressures lower than 5" W.C. natural or 11" W.C. propane, consult factory.

REP FIRM _____

SUBMITTED BY _____

JOB NAME _____

ARCHITECT _____

ENGINEER _____

CONTRACTOR _____

DATE _____

FUTERA II 1500

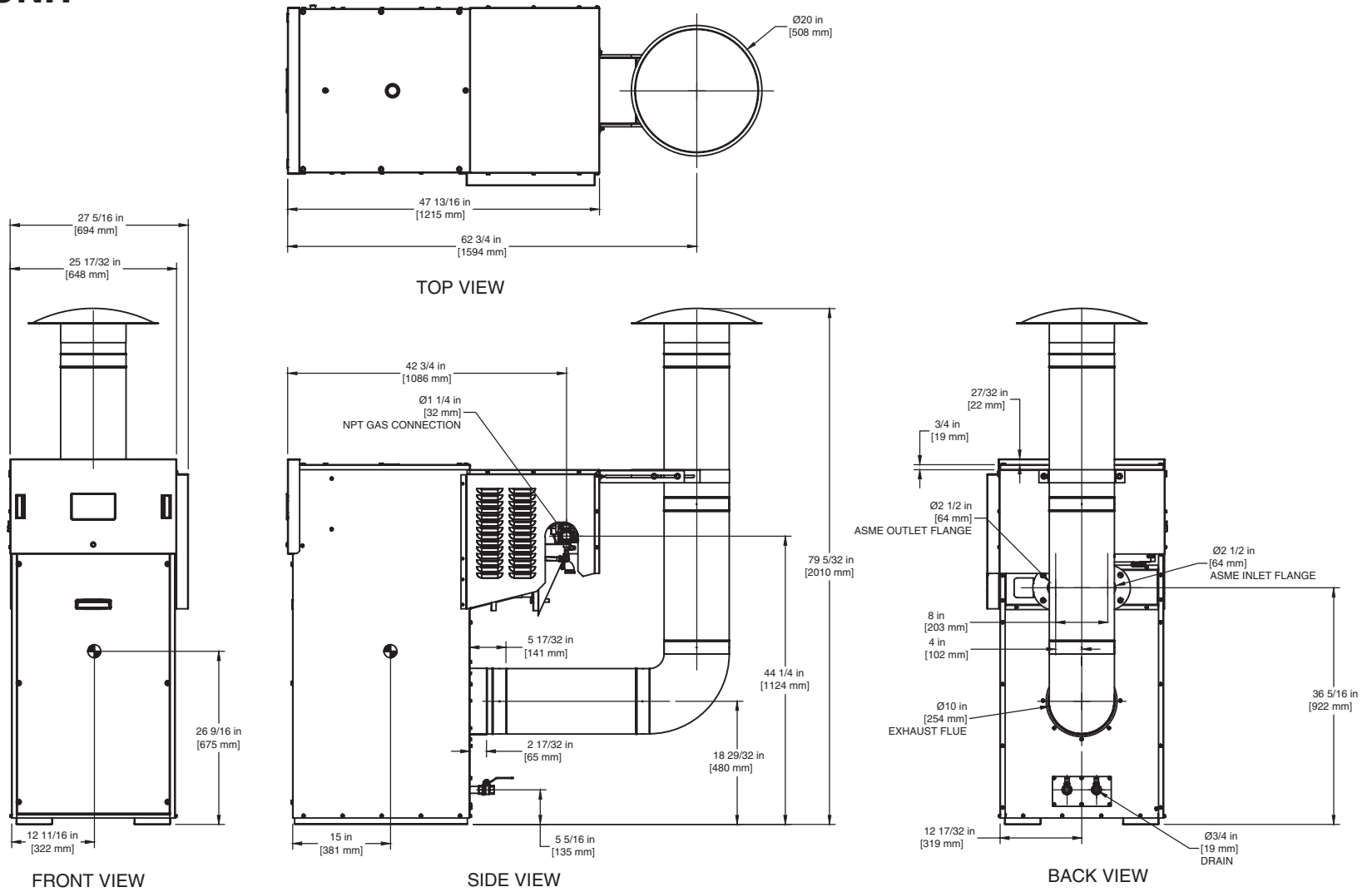
Category I or Category III Appliance

(see Installation and Operation Manual for venting information)



A Division of Mestek, Inc.
Westfield, MA 01085
(413) 568-9571

OUTDOOR UNIT



FUTERA II 1500

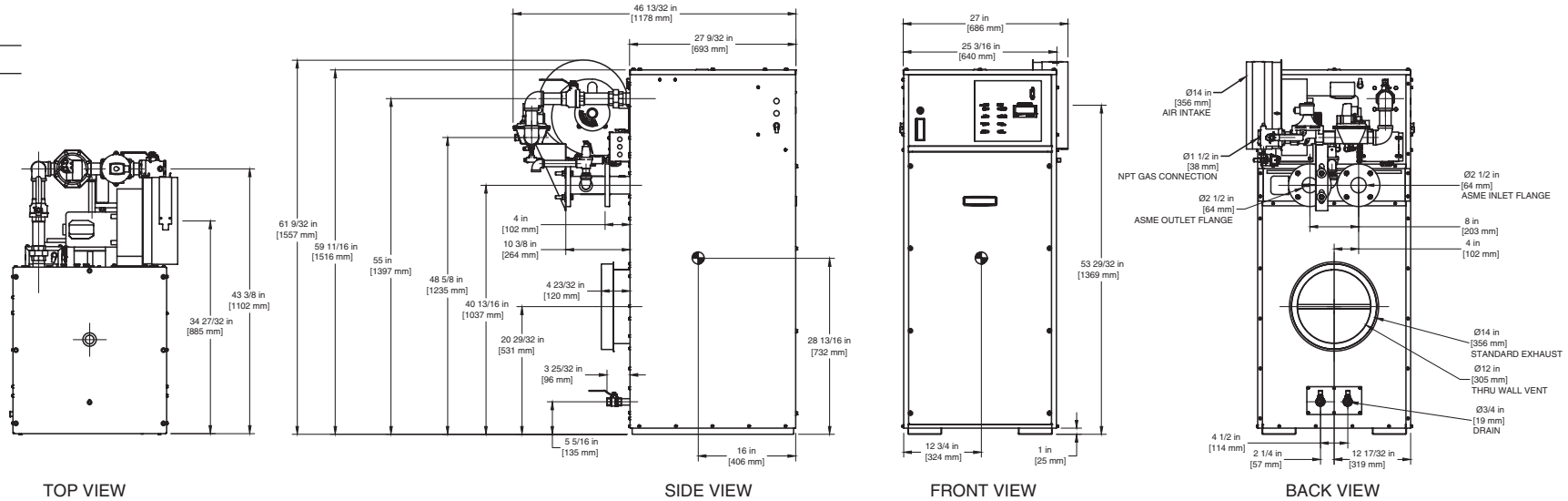
- Notes:**
1. Dimensions are approximate and should not be used to "rough-in" equipment.
 2. Dimensions are subject to change without notice.

INDOOR UNIT

RSUB-69 REV D

CODE OPTIONS

CSD-1	Manual Reset LWCO
-------	-------------------



Notes:

1. Dimensions are approximate and should not be used to "rough-in" equipment.
2. Dimensions are subject to change without notice.

BOILER CERTIFIED RATINGS & CAPACITIES

Fuel Type	Natural/Propane Gas	Boiler FLA	11.5*
Input BTU/hr.	1,750,000 / 513 kW	Min. Gas Pressure Required	5"W.C.**
Output BTU/hr.	1,487,500 / 436 kW	Max. Gas Pressure Allowed	14"W.C.
Electrical Requirements	120 VAC / 1 ph / 60 hz	Operating Weight	799 lbs. / 363 kg.

BOILER TEMPERATURE RISE / PRESSURE DROP

25°F / 13.9°C				30°F / 16.7°C				35°F / 19.4°C			
Flow Rate		Pressure Drop		Flow Rate		Pressure Drop		Flow Rate		Pressure Drop	
GPM	L/s	Ft	kPa	GPM	L/s	Ft	kPa	GPM	L/s	Ft	kPa
119.0	7.5	3.67	10.8	99.2	6.3	2.60	7.7	85.0	5.4	2.00	5.8

BOILER / WATER HEATER TRIM & CONTROLS

Main Gas Valve	V4944B	Main Ball Valve	1 1/2"
Firing Valve	1 1/2"	Pilot Regulator	White-Rodgers 25M
Safety Valve	ASCO L8214G 1 1/2"	Air Switch	HUBA
Ignition Control	Honeywell RM7897C	Blower Motor	Marathon 3/4 hp - FLA 9.8
Operating Control (FB/FW)	Jumo	Relief Valve - FB	1" x 1 1/4" set @ 50 psi
High Limit	Honeywell L4008E	Relief Valve - FW	3/4" x 3/4" set @ 125 psi
		Flow Switch	TACO

WATER HEATER HOURLY RECOVERY CAPACITY (GPH & LPH)

40°F	22°C	60°F	33°C	80°F	44°C	100°F	56°C	120°F	67°C	140°F	78°C
4359	16478	2906	10985	2180	8239	1744	6591	1453	5493	1245	4708

Futera II 1750 model water heater not available for sale in Canada due to NRCan Regulations.

A.S.M.E.

ASME Sect IV Htg Surface	188.57 Sq. Ft. / 17.52 Sq. M.	Design Data	Max. 160 psig & 250°F
Water Volume	5.3 gal / 20.1 Liters		

* Add circulator amps.

** For incoming gas pressures lower than 5" W.C. natural or 11" W.C. propane, consult factory.

REP FIRM _____
 SUBMITTED BY _____
 JOB NAME _____
 ARCHITECT _____
 ENGINEER _____
 CONTRACTOR _____
 DATE _____

FUTERA II 1750

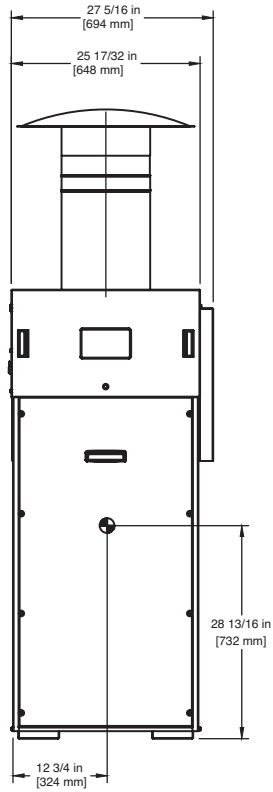
Category I or Category III Appliance

(see Installation and Operation Manual for venting information)

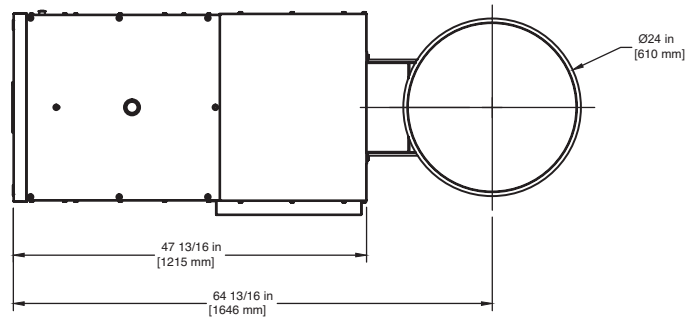


A Division of Mestec, Inc.
 Westfield, MA 01085
 (413) 568-9571

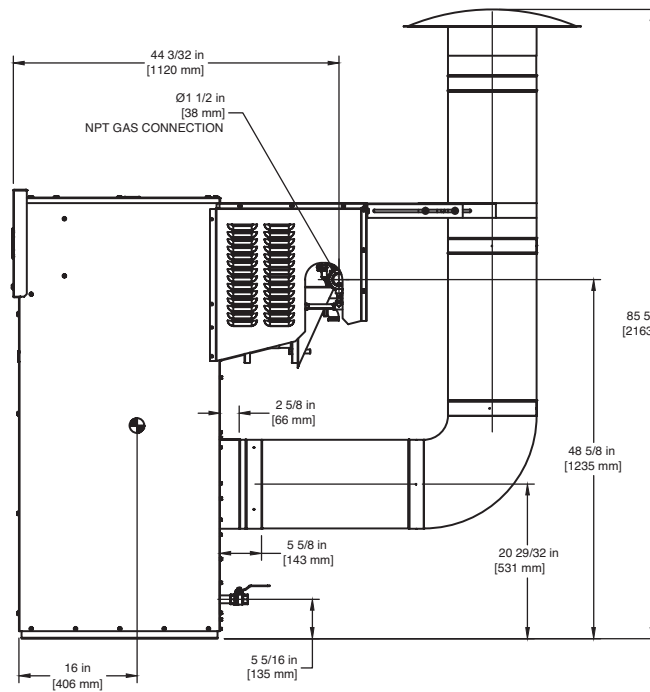
OUTDOOR UNIT



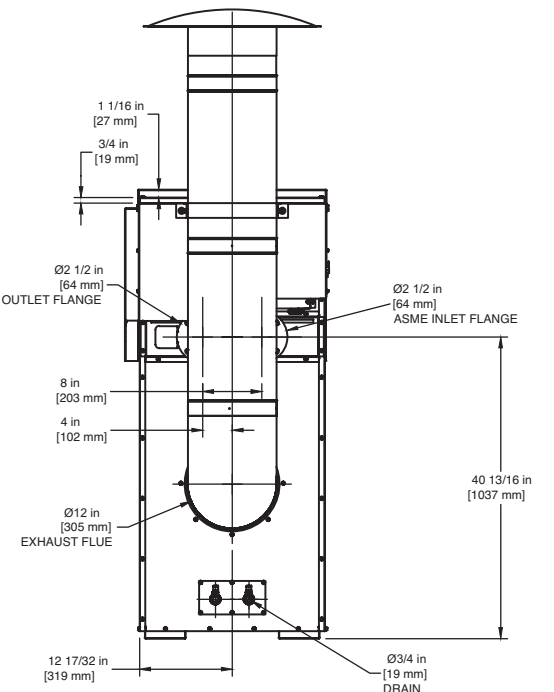
FRONT VIEW



TOP VIEW



SIDE VIEW



BACK VIEW

FUTERA II 1750

Notes:

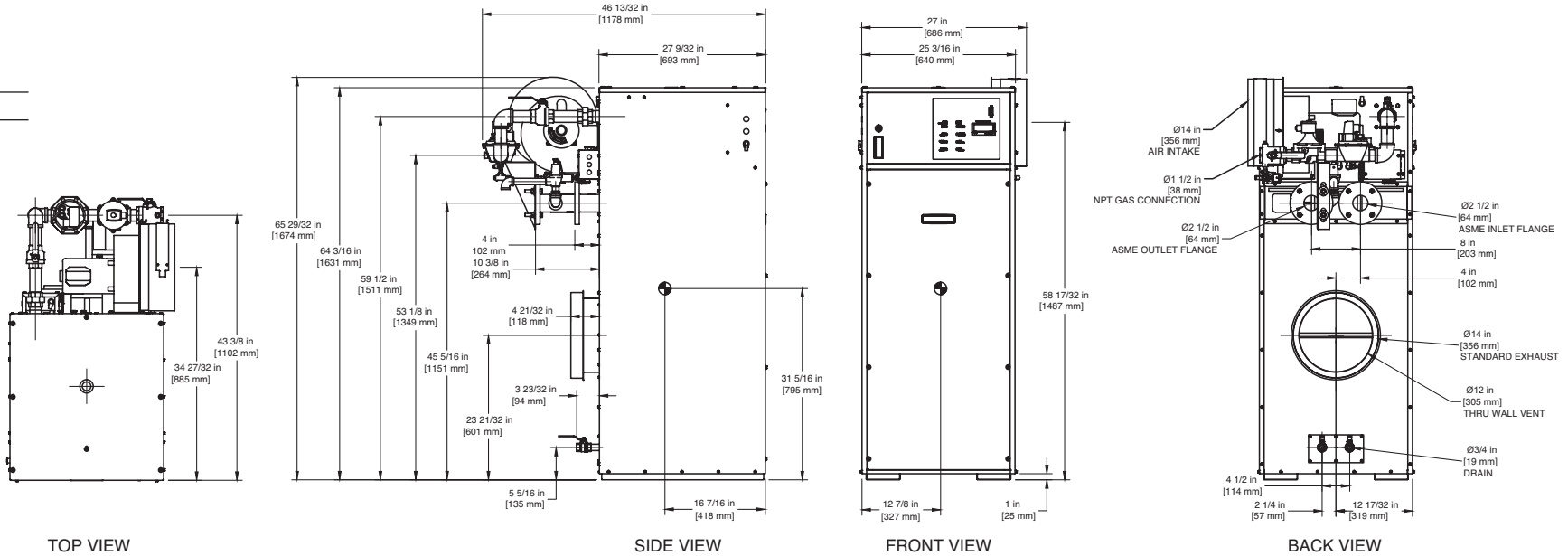
1. Dimensions are approximate and should not be used to "rough-in" equipment.
2. Dimensions are subject to change without notice.

INDOOR UNIT

RSUB-70 REV D

CODE OPTIONS

CSD-1 Manual Reset LWCO



Notes:

1. Dimensions are approximate and should not be used to "rough-in" equipment.
2. Dimensions are subject to change without notice.

BOILER CERTIFIED RATINGS & CAPACITIES

Fuel Type	Natural/Propane Gas	Boiler FLA	11.5*
Input BTU/hr.	1,950,000 / 571 kW	Min. Gas Pressure Required	5" W.C.**
Output BTU/hr.	1,657,500 / 486 kW	Max. Gas Pressure Allowed	14" W.C.
Electrical Requirements	120 VAC / 1 ph / 60 hz	Operating Weight	863 lbs. / 392 kg.

BOILER TEMPERATURE RISE / PRESSURE DROP

25°F / 13.9°C				30°F / 16.7°C				35°F / 19.4°C			
Flow Rate		Pressure Drop		Flow Rate		Pressure Drop		Flow Rate		Pressure Drop	
GPM	L/s	Ft	kPa	GPM	L/s	Ft	kPa	GPM	L/s	Ft	kPa
132.6	8.4	5.14	15.1	110.5	7.0	3.70	10.8	94.7	6.0	2.80	8.1

BOILER / WATER HEATER TRIM & CONTROLS

Main Gas Valve	V4944B	Main Ball Valve	1 1/2"
Firing Valve	1 1/2"	Pilot Regulator	White-Rodgers 25M
Safety Valve	ASCO L8214G 1 1/2"	Air Switch	HUBA
Ignition Control	Honeywell RM7897C	Blower Motor	Marathon 3/4 hp - FLA 9.8
Operating Control (FB/FW)	Jumo	Relief Valve - FB	1" x 1 1/4" set @ 50 psi
High Limit	Honeywell L4008E	Relief Valve - FW	3/4" x 3/4" set @ 125 psi
		Flow Switch	TACO

WATER HEATER HOURLY RECOVERY CAPACITY (GPH & LPH)

40°F	22°C	60°F	33°C	80°F	44°C	100°F	56°C	120°F	67°C	140°F	78°C
4976	18809	3317	12539	2488	9405	1990	7524	1659	6270	1422	5374

Futera II 1950 model water heater not available for sale in Canada due to NRCan Regulations.

A.S.M.E.

ASME Sect IV Htg Surface	215.98 Sq. Ft. / 20.06 Sq. M.	Design Data	Max. 160 psig & 250°F
Water Volume	5.7 gal / 21.6 Liters		

* Add circulator amps.

** For incoming gas pressures lower than 5" W.C. natural or 11" W.C. propane, consult factory.

REP FIRM _____
 SUBMITTED BY _____
 JOB NAME _____
 ARCHITECT _____
 ENGINEER _____
 CONTRACTOR _____
 DATE _____

FUTERA II 1950

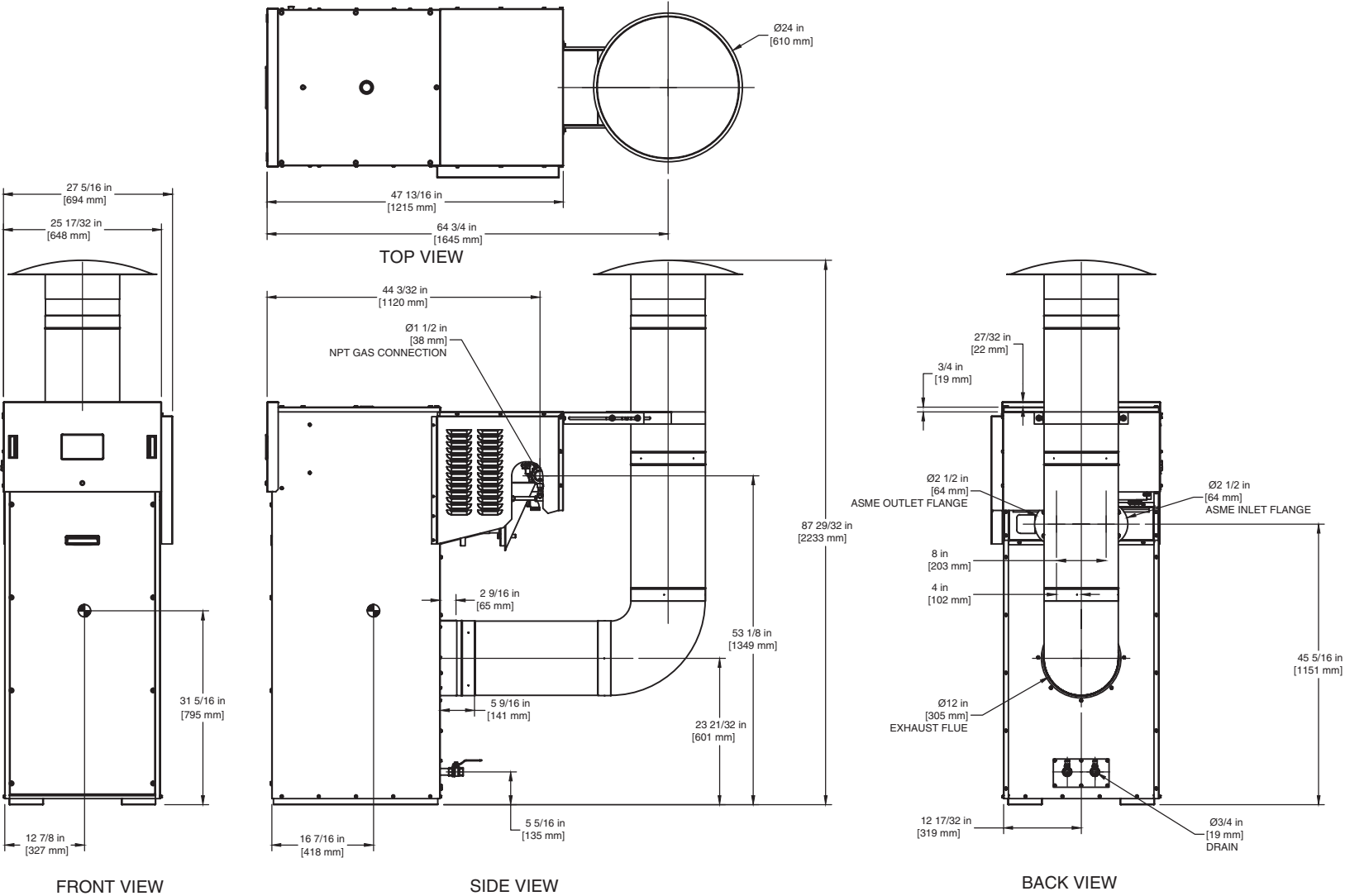
Category I or Category III Appliance

(see Installation and Operation Manual for venting information)



A Division of Mestek, Inc.
 Westfield, MA 01085
 (413) 568-9571

OUTDOOR UNIT



FUTERA II 1950

- Notes:**
1. Dimensions are approximate and should not be used to "rough-in" equipment.
 2. Dimensions are subject to change without notice.